

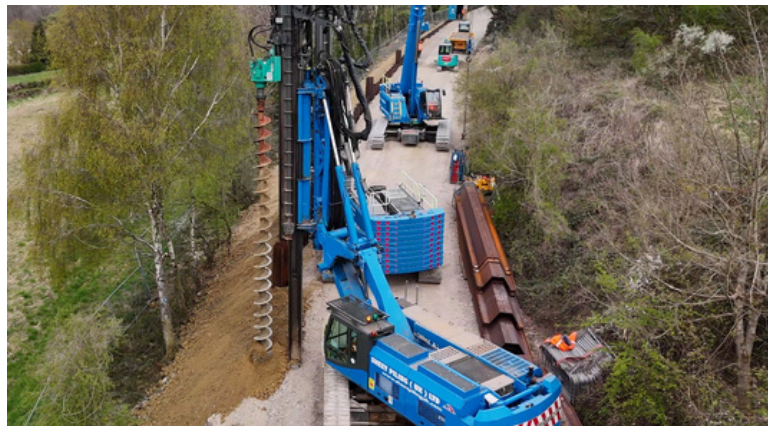
B4058 Rushmire Hill Geotechnical Remediation Scheme

Progress update 3

A major milestone has been achieved in the project with the successful completion of the piling phase, which was carried out over a three-week period. A total of 255 metres of sheet piles have been installed, reaching depths of between 7 and 10 metres to form the sheet pile wall. The process involved pre-augering the ground, followed by the accurate installation of steel sheet piles using a vibro hammer to reach the required depths. With this phase now complete, the piling machinery has been demobilised from site.



We are now in the process of removing the material that formed the temporary piling platform, in preparation for the next stage of road reconstruction. This will include trimming the area to subbase level in readiness for the final surfacing layer. We will also be installing rear wall filter drainage along the sheet pile wall. The next steps will involve applying road markings, installing fencing along the sheet pile wall and the installation of ground monitoring equipment.



You can find out further information here: <https://www.gloucestershire.gov.uk/major-projects-list/geotechnical-and-structural/b4058-rushmire-hill/>